

President's Message

The new Board of Directors elected at the Annual Meeting in January were

- Trude Fawson, President (H-1)
- Tom Walton, Vice President (G-3)
- Scott Schneider, Treasurer (F-23)
- Marion Newton, Secretary (H-2)
- Gary Hoffman, Director (C-1)

Your 2008 Board consists mainly of people who live at KSV all or a majority of the year. We are owners and residents and very excited about the plans we have for the coming year.

The previous Board worked hard to get our economic house in order. Now this task has been accomplished we have an opportunity to look closer at the collective house that we live in, our twelve buildings, pool and common areas, to ensure it is in order.

After four years our development is starting to show some signs of age. It is important in order to preserve our quality of life and financial investment, that Kona Sea Villas maintain its resort-like appearance. Therefore, landscaping and maintenance are our top priorities for 2008.

To help achieve our goals we have established three standing committees, all with a charter to direct them.

- Landscaping—Brenda Walton, Chair
- Maintenance—Rick Wilson, Chair
- Communications—Judy Hoffman, Chair

The Landscaping and Maintenance Committees serve as the eyes and ears for the Board in their respective areas, walking the property, making recommendations and monitoring progress.

The Communications Committee serves as a link between the Board and owners. Their task is to keep everyone informed and solicit input about all owner issues.

These committees are hard at work to make Kona Sea Villas the condominium of choice in Kona. You will be seeing a great deal of activity in the next several months as we work to upgrade many of our facilities. However, we need your help to be successful. Please send your suggestions and comments to us at konaseavillas@yahoo.com

Trude Fawson, President



KSV Volunteers & PUNA Nursery Work Together

On Saturday April 5th at 7:30 am, 22 employees of PUNA, 12 owners and residents of KSV and one big backhoe gathered together to landscape a large slope below the pool.

By 3:30 pm the barren hillside was turned into an artists masterpiece with rock culverts and walls, palm trees and a colorful assortment of plants and ground cover. PUNA provided labor, equipment and plantings for the price of a BBQ lunch.

MAHALO KSV residents Tom Walton, Scott Fawson & Mike Newton for backhoe work in digging & moving rocks; Rick Wilson & John Kilkenney for some hard "getting your hands dirty" labor; Gary & Judy Hoffman, Marion Newton, Trude Fawson, Brenda Walton, Sophia Russell & Dawn Perry for preparations & cooking of a delicious barbeque lunch.

A super big MAHALO to Scott Fawson for donating many hours to designing this project, selecting plants & countless hours of labor.

If you are not in residence at this time to see the improvements, we are posting photos on the KSV website, www.konaseavillas.com

Contact Info

Correspondence for Board of Directors to Kona Sea Villas—BoD
 75-6060 Kuakini Hwy
 Kailua-Kona, HI 96740

Certified Mgnagement, Inc.

Sue Niemann, Acct Exec
 Certified Management, Inc.
 75-169 Hualalai Road
 Kailua-Kona, HI 96740
 808-329-6063 x 22
 808-326-2486 fax

On -Site Managers

Larry & Claudia Elmore
konaseavillas@yahoo.com
 808-443-7436 office
 808-331-1082 fax

Quarterly Board of Directors Meeting

April 23, 2008, 3:00 PM
 KSV Pool Pavilion

∞ ∞ ∞ ∞ ∞

Pupu Potlucks

1st Tuesday of each month
 6:00 PM Bring a pupu to share and your own table service and beverage. All residents welcome.

KSV Committee Reports

The **Landscape Committee** is composed of Mary Christ (B-3), Scott Fawson (H-1) and Brenda Walton (G-3). Board Member Marion Newton and Site Manager Larry Elmore serve in an advisory capacity.

The Committee makes weekly rounds on the property, noting items needing attention and suggesting improvements to the Board as they see needed.

∞ ∞ ∞ ∞ ∞ ∞ ∞

The **Maintenance Committee** is composed of Rick Wilson (L-4) with Board Member Gary Hoffman and Larry Elmore as advisors. Additional volunteers are needed.

This committee will address physical and structural needs of KSV, including aging and deterioration of facilities and make recommendations to the Board.

∞ ∞ ∞ ∞ ∞ ∞ ∞

The **Communications Committee** member is Judy Hoffman (C-1). Tom Walton and Claudia Elmore are advisors. An additional volunteer would be appreciated here also.

Responsibilities include managing the website and preparing a quarterly newsletter for distribution to all owners and residents..

∞ ∞ ∞ ∞ ∞ ∞ ∞

Each of the committees welcomes comments and suggestions from owners and residents. These can be submitted through a Maintenance Request form found at the Pool Pavilion, or by email on the KSV website: www.konaseavillas.com. If you need information regarding login and password, call the KSV office at 808-443-7436.

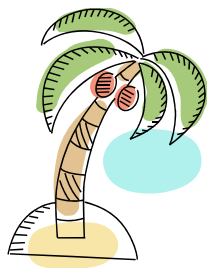
Foxtail Palms Must Go

It is with great sadness we advise that the two foxtail palms adjacent to the pool and hot tub must be removed.

Their roots are uplifting and cracking the cement surrounding the pool and hot tub and are on their way to breaking through the walls of the hot tub.

After extensive research and consultation with professionals the Board and Landscaping Committee has found that the only cost effective and permanent solution is to cut and remove the trees.

Unfortunately, we cannot save the trees without incurring thousands of dollars of cost to hire a crane, replace damaged lawn and take down fencing. And with that, there is no guarantee that the palms would live.



Being a Good Neighbor Means.....

- while at the pool, remember sound travels. Keep your neighbors in mind , particularly late evenings.
- replacing pool patio furniture if moved while you are there or for your event. The next user will appreciate your thoughtfulness.
- cleaning the exercise equipment after using.
- placing all discarded items in the dumpster, even if it means breaking the item down. Our garbage service only removes what is in the dumpster. Equipment, furniture, appliances you may think could be recycled, will just be left behind for someone else to deal with.
- recycling all cans and bottles that are HI 5c into the smaller trash cans in the garbage enclosure. Other glass, plastic, paper etc goes in the dumpster.

Mahalo

Our website is up and running again—check it out at www.konaseavillas.com.

~~~~~ We're going Electronic ~~~~~

For ease, speed and economy, future announcements, Board information and newsletters will come to you via email. (If you do not have computer access to email, we will continue communications by regular mail.) All email information will be kept absolutely confidential, used only for KSV communications and not shared. We have email addresses for many of you, but are unsure if they are current and/or accurate. Please take a moment to communicate the following information by email to konaseavillas@yahoo.com or by going on the KSV website (www.konaseavillas.com) to "Contact info".

Name(s) _____ Unit # _____ email: _____